



The Proven Standard for Compliance & Governance of Regulated Services



COMPLi[®]
powered by **scientist.com**

Source and Provide Services with Confidence and the Highest Ethical Standards

COMPLi[®] was created in partnership with leading pharmaceutical companies, commercial suppliers and academic institutions to reduce friction for both researchers and suppliers in a way that respects the sensitive nature of sourcing regulated services and materials.

Users can access a customizable compliance process that complements internal strategies and provides visibility, transparency and control all from a single location.

Regulated Services Supported:

- Human Biological Sample Acquisition (supported by VERIF.i[®])
- In Vivo Services (supported by VERIF.i)
- Value, Evidence & Access
- GLP Services
- Biomarkers
- Consumer/Personal Care
- Raw Materials Acquisition
- Chemistry, Manufacturing and Controls (CMC)

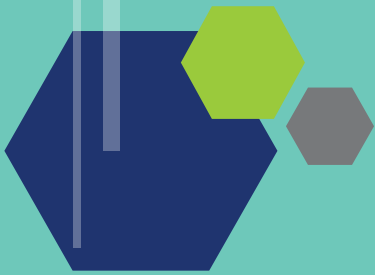
Access Due Diligence Information:

- Commercial Written Assessment
- Technical Questionnaires
- Service Specific Written Assessment
 - Human Biological Samples
 - Value, Evidence & Access
 - Raw Materials
 - CMC
 - Animal Welfare
 - GLP
 - Biomarkers
 - Disease Models
- On-Site Pre-Assessments
 - VERIF.i Program

A Few of Our Top Suppliers of Regulated Services:



Over 1,000 Additional Suppliers in HBS, RWE and In Vivo Services



“ Acquiring high-quality human biospecimens is no different than any other procurement activity: it is extremely time consuming, requires deep knowledge of your stakeholders and their culture and necessitates enormous attention to detail in every respect in order to understand all steps in the procurement, processing, testing and storage activities that went into the biospecimens and ensuring that they comply with current standards.”

— Scientist.com Registered Sample Provider, from the report, *Human Biological Samples: Recent Sourcing Trends and Best Practices*



COMPLi Now Covers Onsite Pre-Assessments:

VERIF.i is an expansion of Scientist.com’s COMPLi program. It enables suppliers to differentiate themselves from their peers while enabling customers to gain valuable, unbiased insight into supplier’s facilities, personnel and processes.

VERIF.i is an extension of our existing written diligence, the results of which are available on the platform. The VERIF.i program currently supports animal welfare and human biological sample onsite preassessments, but it will be expanding into additional regulated service areas in the near future.

The VERIF.i’d Supplier badge (shown to the right) is provided to in-network suppliers participating in the VERIF.i pre-assessment program with a valid VERIF.i report.



In 2021, the FDA Group published two reports on how VERIF.i supports researchers and suppliers conducting onsite pre-assessments.



COMPLi In the News:

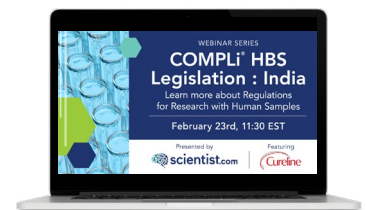
Scientist.com Expands Award-Winning Compliance Platform to Include International Research Consortium’s Preclinical Study Standards

COMPLi now supports guidelines set forth by Enhancing Quality In Preclinical Data (EQIPD) to improve data integrity standards and accelerate novel drug development.



Educational Webinar Series

Co-hosted by Scientist.com and industry leaders in their respective areas of expertise, these educational webinars brought together key stakeholders within human biological sample acquisition, animal welfare and value, evidence & access to discuss trends, challenges and solutions when sourcing regulated services.



For more information contact compliance@scientist.com

